

ADMS-11

Instruction Manual

The ADMS-11 software provides convenient editing of the FT3DR/DE memory channel frequencies, channel information and alpha tags, using a personal computer. Also the transceiver parameters and the setup menu items may be edited and configured easily from the computer keyboard.

TABLE OF CONTENTS

Introduction	3	• Sort	16
About this manual	3	Communications (Data communication with the FT3DR/DE)	16
Important Notes	3	Settings	17
System Requirements	3	• Set Mode	17
Supported Operating Systems	3	• Tool Bar	18
CPU	3	• Status Bar	18
RAM (System Memory)	4	Window	18
HDD (Hard Disk)	4	Setting the Template Items	19
Cables	4	Memory	19
microSD	4	Memories	19
Necessary microSD memory card reader	4	SKIP	19
Necessary PC peripheral interfaces	4	PMS	19
The flow of a setup of ADMS-11	4	About the setting items of each memory channels ...	19
Trademarks	5	• Priority CH	19
Setup of the ADMS-11	5	• Receive Frequency/ Transmit Frequency	19
Preparation	5	• Offset Frequency	19
ADMS-11 Programming Software Installation	5	• Offset Direction	20
Uninstalling the ADMS-11	6	• AUTO MODE	20
SCU-19 USB Driver Software Installation	6	• Operating Mode	20
Connect the FT3DR/DE and the PC	6	• DIG/ANALOG	20
Execute the ADMS-11	7	• TAG	20
Display examples	7	• Name	20
First Screen	7	• Tone Mode	20
Menu Bar	7	• CTCSS Frequency	20
TAB Menu Bar	8	• DCS Code	20
Set mode screen	8	• DCS Polarity	20
Communications (Data communication with the FT3DR/DE)	9	• User CTCSS	21
Communication port setting	9	• RX DG-ID	21
Get Data from FT3D	9	• TX DG-ID	21
Send Data to FT3D	10	• Tx Power	21
Get Data from SD card	10	• Skip	21
Send Data to SD card	10	• AUTO STEP	21
Names and Functions of Menu Bar	11	• Step	21
File	11	• Memory Mask	21
• New	11	• ATT	21
• Open	11	• S Meter SQL	21
• Close	11	• Bell	21
• Save	11	• Narrow	21
• Save as	11	• Clock Shift	22
• Import	12	• BANK 1 to BANK 24	22
• Export	12	• Comment	22
• Import with FTM-100D/400D format	12	VFO A / VFO B	23
• Export with FTM-100D/400D format	12	About the setting items of VFO A / VFO B frequencies	23
• Import with FT2D format	12	• Receive Frequency	23
• Export with FT2D format	12	• Transmit Frequency	24
• Print	13	• Offset Frequency	24
• Exit	13	• Offset Direction	24
Edit	13	• AUTO MODE	24
• Undo	14	• Operating Mode	24
• Cut	14	• DIG/ANALOG	24
• Copy	14	• Tone Mode	24
• Paste	14	• CTCSS Frequency	24
• Find	14	• DCS Code	24
• Find Next	14	• DCS Polarity	24
• Goto Channel	14	• User CTCSS	25
• Insert Channel	15	• RX DG-ID	25
• Delete Channel	15	• TX DG-ID	25
• Clear Channel	15	• Tx Power	25
• Move Up	15	• AUTO STEP	25
• Move Down	15	• Step	25
• Add Frequency Range	15	• ATT	25
		• S Meter SQL	25
		• Bell	25
		• Narrow	25
		• Clock Shift	25
		• Comment	25

HOME	26
About the setting items of	
HOME channel frequency	26
• Receive Frequency / Transmit Frequency	26
• Offset Frequency	26
• Offset Direction	26
• AUTO MODE	26
• Operating Mode	27
• DIG/ANALOG	27
• TAG	27
• Name	27
• Tone Mode	27
• CTCSS Frequency	27
• DCS Code	27
• DCS Polarity	27
• User CTCSS	27
• RX DG-ID	27
• TX DG-ID	27
• Tx Power	28
• AUTO STEP	28
• Step	28
• ATT	28
• S Meter SQL	28
• Bell	28
• Narrow	28
• Clock Shift	28
• Comment	28
SW Banks	29
About the setting items of	
SW Banks channel frequency	29
• TAG	29
• ATT	29
• BANK 1 to BANK 24	29
• Comment	29
Marine Banks	30
About the setting items of	
Marine Banks channel frequency	30
• Skip	30
• ATT	30
• BANK 1 to BANK 24	30
• Comment	30
Weather	31
About the setting items of	
Weather channel frequency	31
• TAG	31
• Name	31
• Skip	31
• ATT	31
• BANK 1 to BANK 24	31
• Comment	31
Troubleshooting	32




Introduction

The ADMS-11 programming software uses a Personal Computer to quickly enter and save the FT3DR/DE memory channel frequencies and data. Also the many menu settings may be adapted for individual operating preferences. All of the information is saved. The setting data can be imported from the FT3DR/DE and edited setting data can be transferred to the FT3DR/DE.

- ☐ Edit the frequencies, memory names, squelch settings, repeater settings, transmit power, etc. that is related to the VFO, memory channels, preset memory channels, and the HOME channel, etc.
- ☐ Edit the Memory bank and bank link setting
- ☐ Configure the various set mode menu options on the computer monitor screen
- ☐ Use the handy editing functions, such as search, copy, move and paste

About this manual

This manual contains symbols and conventions to call attention to important information.

Symbols	Description
	This icon indicates cautions and alerts the user should be aware of.
	This icon indicates helpful notes, tips and information.
	This icon indicates other pages containing relevant information.

Important Notes

Before downloading this software, please read the “Important Notes” carefully.

- Copyrights and all other intellectual property rights for the software, as well as the software manual, are the property of YAESU MUSEN CO., LTD.
- The revision, modification, reverse engineering, and decompiling of this software is prohibited. Redistribution, transfer, and resale of downloaded files are also prohibited.
- Do not resell the software or manuals.
- All responsibility for the use of this software lies with the customer. Yaesu cannot be held responsible in any way for any damages or losses, which may be incurred by the customer as a result of using this software.

To use the ADMS-11 programmer, the software application must first be installed onto the computer. Read this manual thoroughly and install the software.

System Requirements

Supported Operating Systems

Microsoft® Windows® 10 (32 bit/64 bit)
Microsoft® Windows® 8.1 (32 bit/64 bit)
Microsoft® Windows® 7 (32 bit/64 bit)

CPU

The performance of the CPU must satisfy the operating system requirements.

RAM (System Memory)

The capacity of the RAM (system memory) must be more than sufficient to satisfy the operating system requirements.

HDD (Hard Disk)

The capacity of the HDD must be more than sufficient to satisfy the operating system requirements. In addition to the memory space required to run the operating system, about 50 MB or more of additional memory space is required to run the program.

microSD

Commercially available microSD memory card

- * When using the following cables, a microSD memory card is not necessary.

Cables

- When using a USB port on the computer: the optional SCU-19 PC connection cable for USB (The SCU-19 is included in the optional SCU-39 kit.)
- When using a COM port connection: the optional CT-169 cables
- * When using the SCU-19 cable, be sure to install the designated driver before connecting the cable to the computer.
- * When using a microSD memory card, these cables are not necessary.

Necessary microSD memory card reader

Commercially available microSD memory card reader

- * When using a SCU-19 or CT-169 cable, memory card reader is not necessary.

Necessary PC peripheral interfaces

USB port (USB 1.1 / USB 2.0) or RS-232C interface (COM port)

- * When using a microSD memory card, these ports are not necessary.

The flow of a setup of ADMS-11

The procedure when using ADMS-11 for the first time is as follows.:

ADMS-11 Programming Software Installation (📖 5 page)



SCU-19 USB Driver Software Installation (📖 6 page)



Connect the FT3DR/DE and the PC (📖 6 page)



Execute the ADMS-11 (📖 7 page)



To a explanation of operation of the ADMS-11 (📖 7 page)

Trademarks

Microsoft®, Windows®, Windows® 7, Windows® 8.1, Windows® 10 are registered trademarks in the United States and other countries.

Setup of the ADMS-11

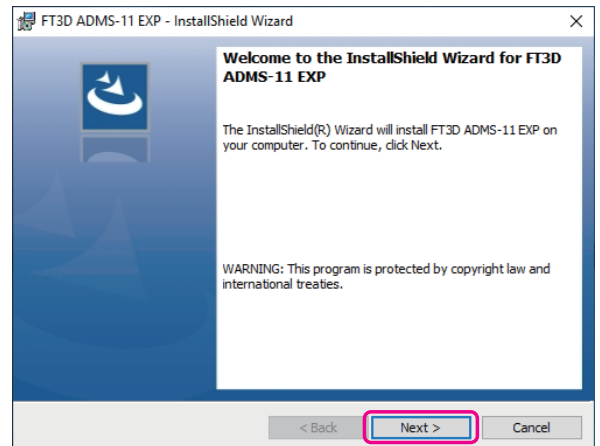
The procedure to install the ADMS-11 on a Windows 10® (64 bit) computer is shown below for the purpose of explanation.

Preparation

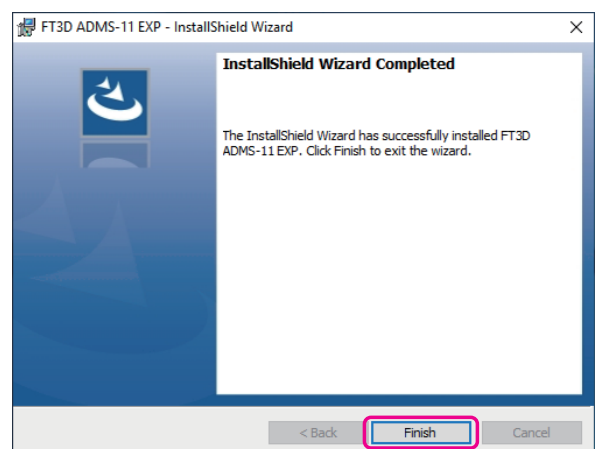
- ☐ Please download the ADMS-11 software from the Yaesu Website for details (<http://www.yaesu.com/>).
- ☐ Download the ADMS-11 Programming Software to the same folder, and extract the downloaded zip file.
- ☐ Start up the computer as an “Administrator” user.

ADMS-11 Programming Software Installation

1. Start up the computer as an “Administrator” user.
2. Double-click the “setup.exe” in the same folder that you have unzip the files.
 - When the [.NET Framework install] dialog box opens, follow the on-screen instructions to install.
3. The dialog box, which is shown right, will open. Click the [Next] button.



4. Select the folder to install, then click the [Next] button.
5. Click the [Install] button.
 - When the [User Account Control] dialog box opens, click the [Yes] button.
6. When the installation is finished, the dialog box shown right will open. Click the [Finish] button, to complete the installation of the software.



Uninstalling the ADMS-11

The procedure to uninstall the ADMS-11 on a Windows 10® (64 bit) computer is shown below for the purpose of explanation.

1. Disconnect the USB Cable from the computer.
2. Click the [Start] button and then click "Settings".
3. Click "Apps".
4. Select "FT3D ADMS-11 EXP" and then click "Uninstall".
 - When the [User Account Control] dialog box opens, click the left mouse button on [Yes].
 - The uninstall of the software will start. The unistall procedure ends with this.

SCU-19 USB Driver Software Installation



Do not connect the transceiver to the computer via the SCU-19 PC Connection Cable until the driver installation process has been completed. Connecting the SCU-19 to the computer before installation has been completed may result in the wrong driver being installed, preventing proper operation.



This procedure is not necessary when exchanging data using a micro SD card.

Before using the SCU-19 PC connection cable, installation of the driver software for the SCU-19 is required. Download the driver software for the SCU-19 in advance.

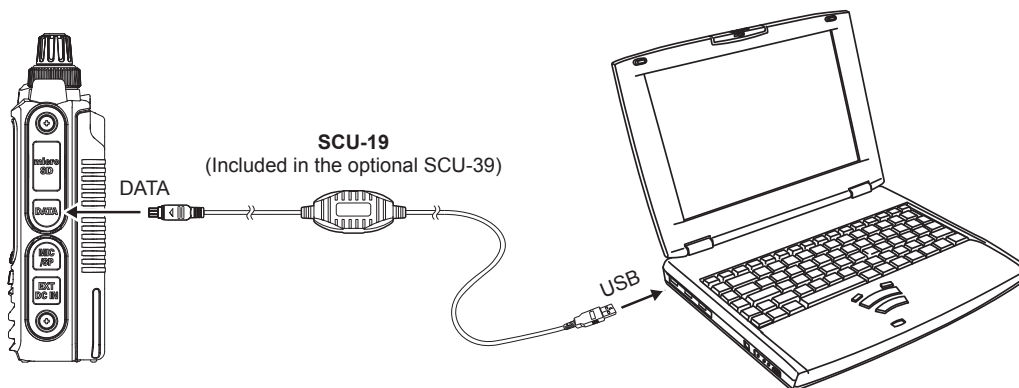
Download the designated driver software from the Yaesu website (<http://www.yaesu.com/>). Read the installation manual thoroughly and install the driver.

Connect the FT3DR/DE and the PC



This procedure is not necessary when exchanging data using a micro SD card.

1. Refer to the figure and connect the PC connection cable SCU-19 or the CT-169.



Execute the ADMS-11

Double-click the “FT3D ADMS-11 EXP” icon on the desktop of a computer.
Click “Exit” in the “File” menu to close the ADMS-11.



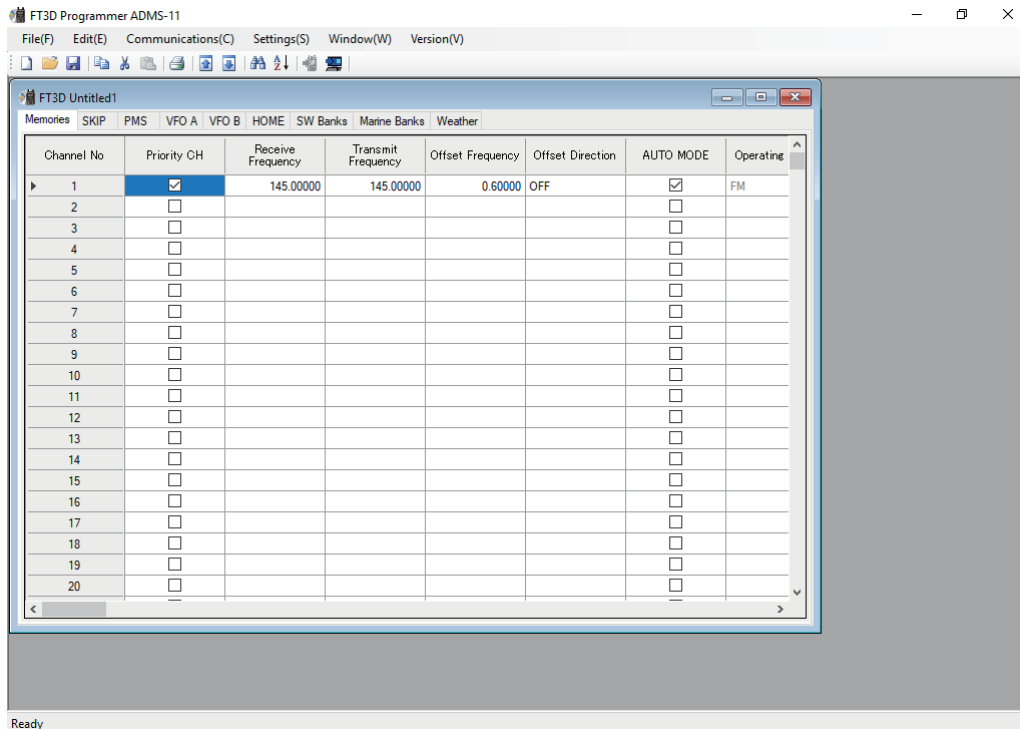
First, use the “**Get Data from FT3D**” command (Page 9) or “**Get Data from SD card**” command (Page 10) to upload the setting data of the FT3D to the ADMS-11 programmer.



Display examples

First Screen

This is the first screen to be displayed when starting the ADMS-11 software.

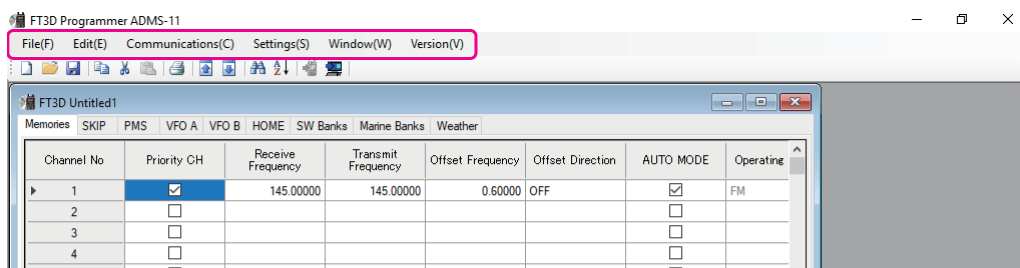


Menu Bar

Click the left mouse button on each Menu in the Menu bar to settings the import/export of the data file, get data form FT3DR/DE and send data to FT3DR/DE.



For more details, see “Names and Functions of Menu Bar”.

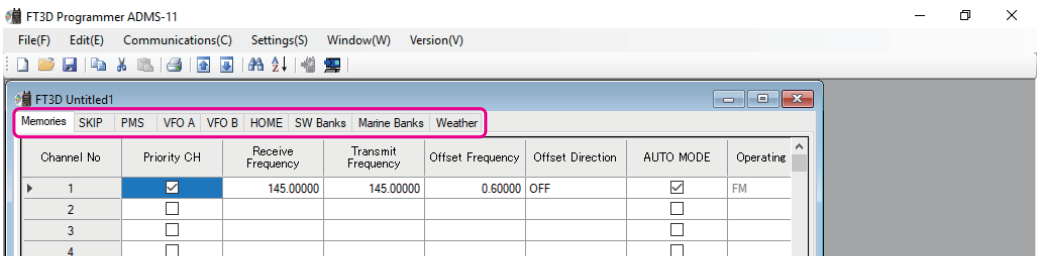


TAB Menu Bar

Click the left mouse button on each TAB in the title bar (Memories, SKIP, PMS, VFO, etc) to display the frequency list of the desired memory channels, VFO and other preset transceiver settings.



For more details, see “Setting the Template Items”.

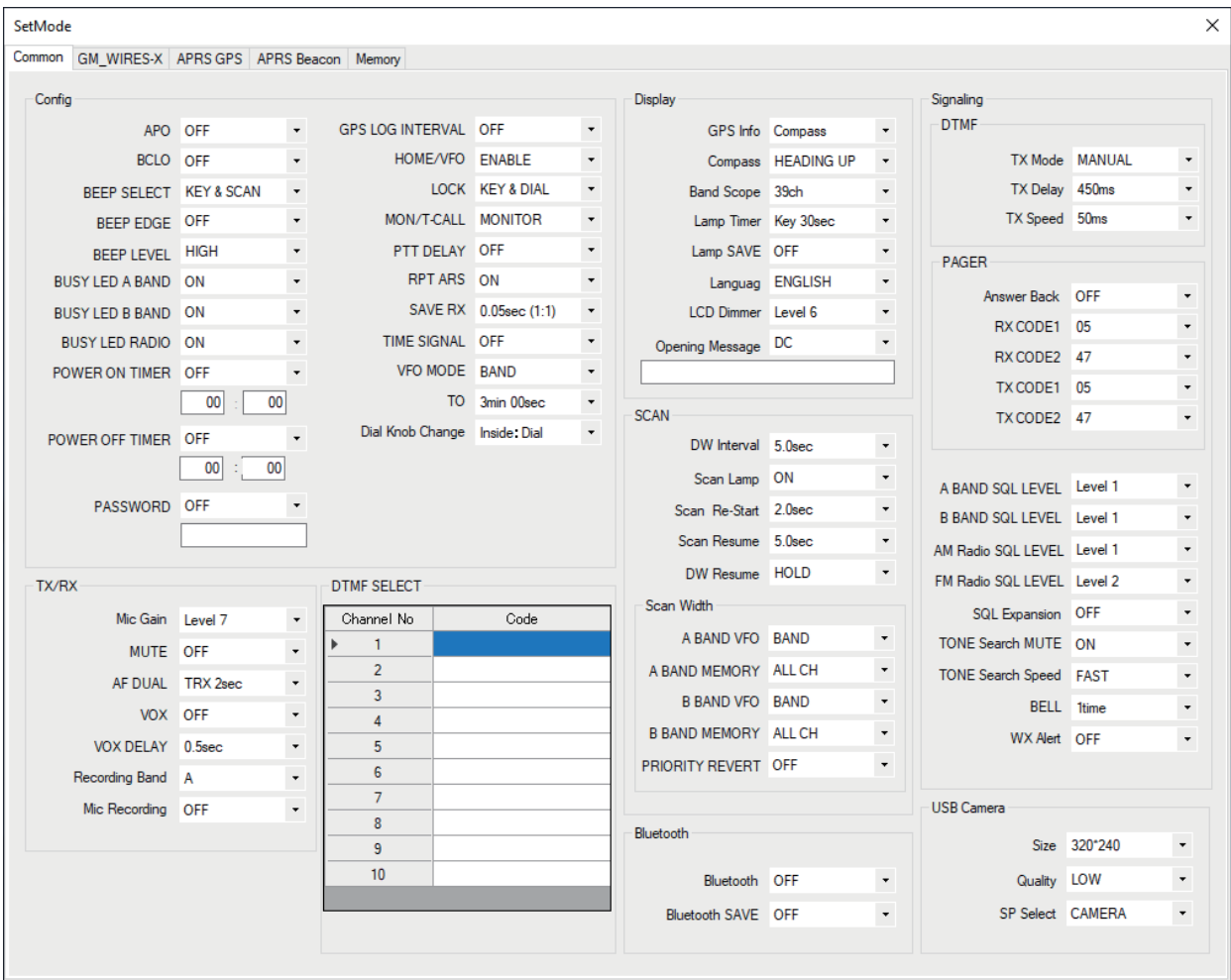


Set mode screen

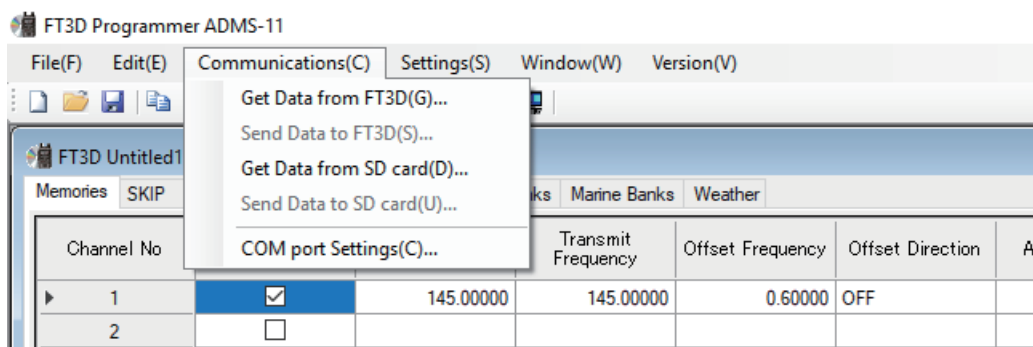
Basic setting items which are not related to memory channels can be configured from “Set Mode”. Click the left mouse button on "Settings" in the "Settings" menu to open the item "Set Mode" window.



For more details, see “Set Mode ”.



Communications (Data communication with the FT3DR/DE)

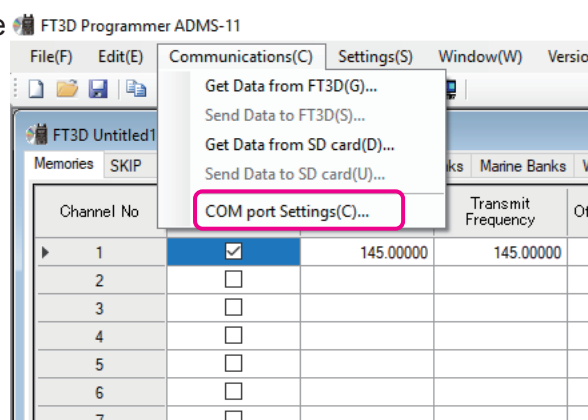


Communication port setting

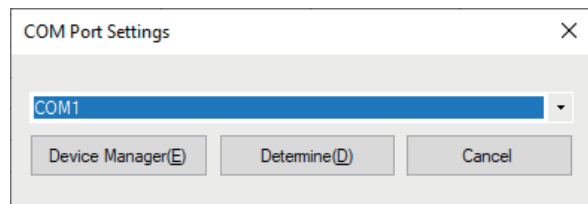


This procedure is not necessary when exchanging data using a micro SD card.

1. Connect the FT3DR/DE to a computer (Refer to the “Connect the FT3DR/DE and the PC”).
2. Execute the ADMS-11 (Refer to the “Execute the ADMS-11”).
3. From the menu bar, select “Communications” menu, and then click on the “COM port Settings”.



4. Click [▼] in the “Serial Port Selection” column and click the COM port connected to the FT3DR/DE.
5. Click [Determine].



Get Data from FT3D

This command transfers the settings data of the FT3DR/DE to the ADMS-11 programmer. To communicate with the FT3DR/DE and create a new data file. Click the “Get Data from FT3D” parameter in the “Communications” menu. The “Get Data From FT3D” window will open. Connect the PC connection cable SCU-19 between the FT3DR/DE and the computer.

Follow the on-screen instructions to acquire data from the FT3DR/DE. When the data transfer is completed, the template screen received from the FT3DR/DE appears on the computer display.

The memory channels and configuration menu data may be edited using the ADMS-11 software tools.



This template and configuration data may be saved to the computer hard drive, using the “Save” or “Save as” commands in the “File” menu.

Send Data to FT3D

This command downloads the ADMS-11 data from the computer to the FT3DR/DE

Click the “Save Data to FT3DR/DE” parameter in the “Communications” menu. The transmission procedure screen will open.



To load a previously created data file to the FT3DR/DE, click the “Open” parameter in the “File” menu, and open the desired file before performing the send data operation above.

Connect the PC connection cable SCU-19 between the FT3DR/DE and the computer.

Follow the on-screen instructions to transmit data to the FT3DR/DE. After the data transmission completes, “Completed” will appear on the computer display, and click the [Close] button. Then, remove the plug of the USB cable and battery charger from the FT3DR/DE, after installation of the battery pack, the FT3DR/DE will automatically start up in accordance with the set data.



- Never disconnect the programming cable while data transmission is in progress.
- Pay careful attention to the power cable and the connections to the FT3DR/DE and the computer, so as not to lose the power during data reception/transmission.

Get Data from SD card

This command imports the settings data from the microSD memory card to the ADMS-11 programmer, and creates a new data file.

Click the “Get Data from SD card” parameter in the “Communications” menu, the data import procedure screen will open.

Insert the microSD memory card with the saved data from FT3DR/DE to the computer.

Select the data to import from the microSD memory card.

Follow the on-screen instructions to select the desired file and then click “Open” to import the data file.

When the data transfer is complete, the template screen which was imported from the FT3DR/DE via the microSD memory card will appear on the computer screen.



This template and configuration data may be saved to the computer hard drive, using the “Save” or “Save as” commands in the “File” menu.

Send Data to SD card

Memories and settings from the ADMS-11 programmer may be transferred to the microSD memory card. Click on “Send Data to SD card” in the “Communications” menu to open the data transmission procedure screen.

To transmit previously created data to the microSD memory card, click “Open” in the “File” menu and open the desired file before performing the Send Data to SD card operation above.



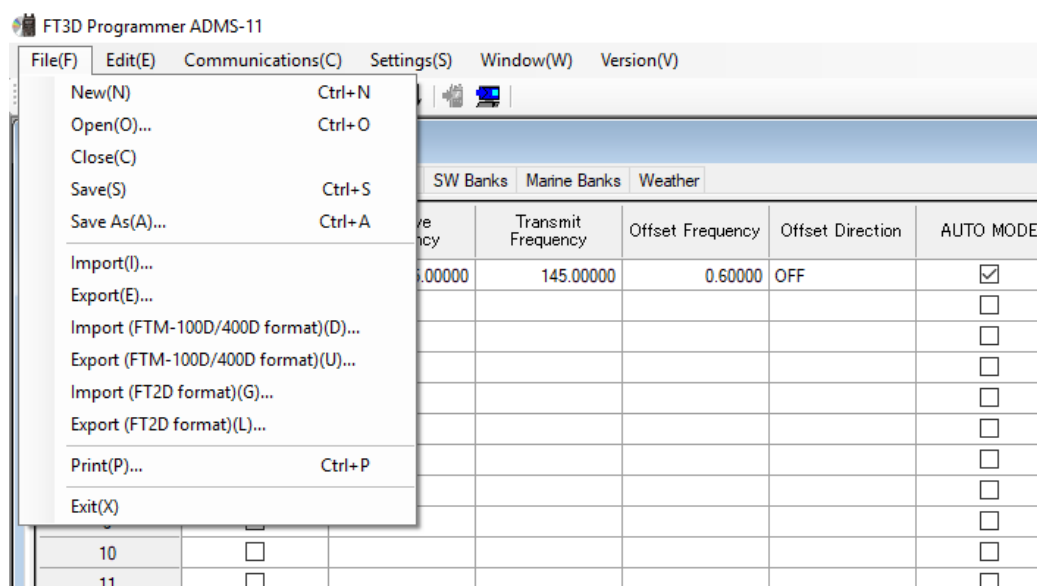
To load a previously created data file to the FT3DR/DE, click the “Open” parameter in the “File” menu, and open the desired file before performing the send data operation above.

Make sure that the microSD memory card to which you want to save the setting data is inserted into the computer SD card slot.

Follow the instructions on the screen to copy the data to the SD card. When the data file transfer to the SD card is complete, a notice “Complete” is displayed on the computer screen.

Names and Functions of Menu Bar

File



• New

Click the "New" parameter in the "File" menu to open a new configuration file. Multiple configuration files may be created and opened at the same time. Standard values are preset for each memory channel, VFO and set mode.

• Open

Click the "Open" parameter in the "File" menu to display the "Open" window. Select the existing saved template file, and click the "Open" button.

• Close

Close the displayed configuration file by clicking the left mouse button on the "Close" parameter in the "File" menu.

• Save

Click the "Save" configuration in the "File" menu. To save the present configuration, and overwrite the selected configuration file without changing the file name.

• Save as

Click the "Save As" parameter in the "File" menu. Specify the file name and destination folder for the selected configuration file and then click the "Save" button to save the file.

• Import

ADMS-11 data files may be created using a spreadsheet such as Microsoft Excel.

To create a data file for the import of data, save the spreadsheet in the “CSV” comma separated file format. A spreadsheet may be easily created by exporting the template data in the “CSV” format using the ADMS-11 “Export” command. After the “CSV” data has been edited the spreadsheet may be imported back into the ADMS-11 Programmer.

A separate import file is needed for each template.

For example, to import the VFO and memory templates; first, click the “VFO” tab to display the VFO template, then import the VFO (CSV) file; next, click the “Memories” tab to display the “Memory” template; then import the Memory (CSV) file.



Do not edit the "Check" line at the right side end of the completed CSV file.

• Export

To export the data file in the “CSV” (Comma Separated Values) format.

Click the “Export” parameter in the “File” menu, On the “Save as” screen displayed, specify the directory and file name and save the file.

Type a file name in the bottom box, then click the [OK] button.

• Import with FTM-100D/400D format

To create a data file for the import of data, save the spreadsheet in the “CSV” comma separated file format (FTM-400D or FTM-100D).

A spreadsheet may be easily created by exporting the template data in the “CSV” format using the ADMS-7 or ADMS-9 “Export” command.

A separate import file is needed for each template. For example, to import the VFO and memory templates; first, click the “VFO” tab to display the VFO template, then import the VFO (CSV) file; next, click the “Memories” tab to display the “Memory” template; then import the Memory (CSV) file.

• Export with FTM-100D/400D format

To export the data file in the “CSV” (Comma Separated Values) format for the ADMS-7 or ADMS-9.

Click the “Export with FTM-100D/400D format” parameter in the “File” menu, On the “Save as” screen displayed, specify the directory and file name and save the file.

Type a file name in the bottom box, then click the [OK] button.

• Import with FT2D format

To create a data file for the import of data, save the spreadsheet in the “CSV” comma separated file format (FT2D).

A spreadsheet may be easily created by exporting the template data in the “CSV” format using the ADMS-8 “Export” command.

A separate import file is needed for each template. For example, to import the VFO and memory templates; first, click the “VFO” tab to display the VFO template, then import the VFO (CSV) file; next, click the “Memories” tab to display the “Memory” template; then import the Memory (CSV) file.

• Export with FT2D format

To export the data file in the “CSV” (Comma Separated Values) format for the ADMS-8.

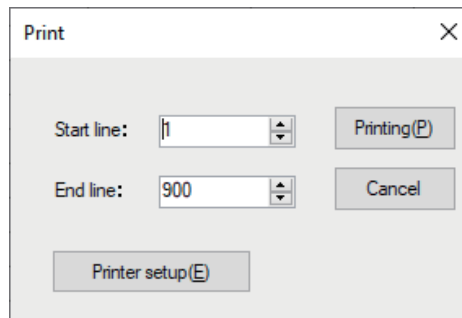
Click the “Export with FTM-100D/400D format” parameter in the “File” menu, On the “Save as” screen displayed, specify the directory and file name and save the file.

Type a file name in the bottom box, then click the [OK] button.

• Print

To print the current template file data to hard copy, click the "Print" parameter in the "File" menu, the "Print" window will open to enable printing. Set the start line and the end line of the data you want to print, and then click the "Printing" button to start printing.

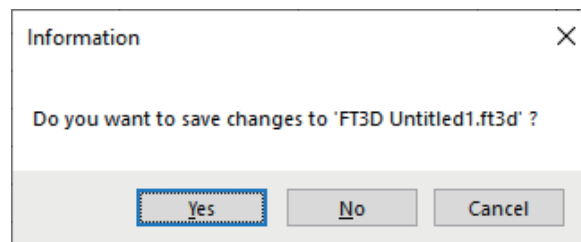
To change the specific printer settings, go to the Printer properties by clicking the the "Printer setup" button.



• Exit

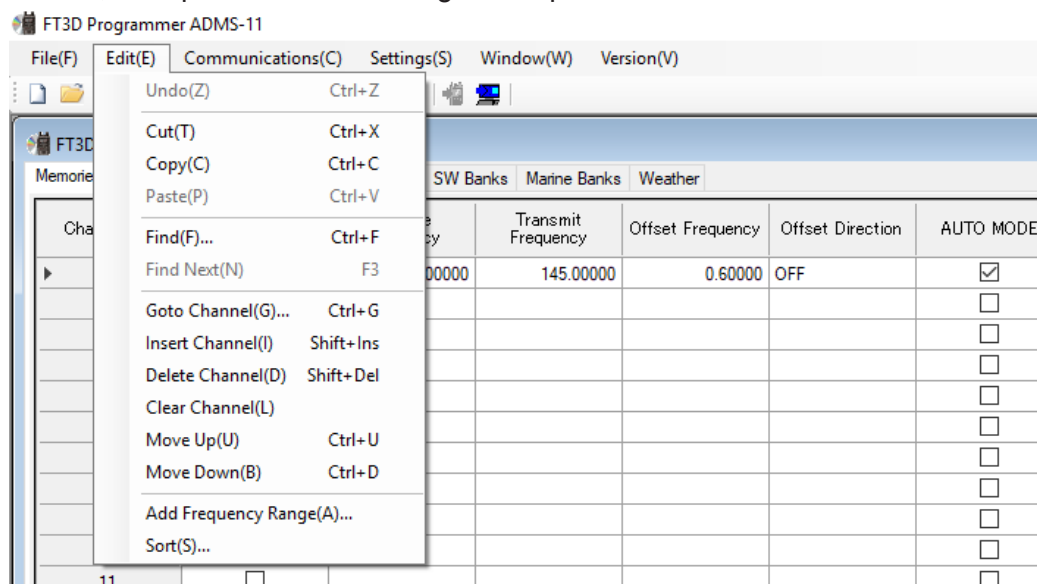
To exit the ADMS-11 programmer, click the "Exit" parameter in the "File" menu to close the ADMS-11 software.

If the following pop-up screen appears to confirm saving, follow the on-screen instruction to select the desired button and close the ADMS-11 software.



Edit

Click the row to edit, then perform the following each operations.



Part of setting items of each row cannot be cut, copy, and paste is not possible.

- **Undo**

To undo the edited data, click the "Undo" parameter in the "Edit" menu.

- **Cut**

To cut the data of the selected area, click the "Cut" parameter in the "Edit" menu.

- **Copy**

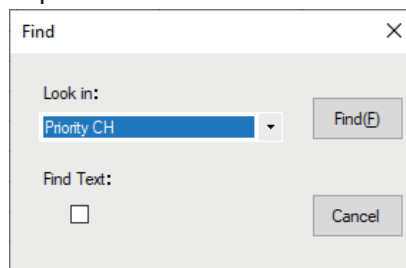
To copy the data of the selected area to the clipboard, click the "Copy" parameter in the "Edit" menu.

- **Paste**

To paste the clipboard data to the selected area, click the "Paste" parameter in the "Edit" menu.

- **Find**

To find a specified text, click the "Find" parameter in the "Edit" menu. The "Find" window will open.



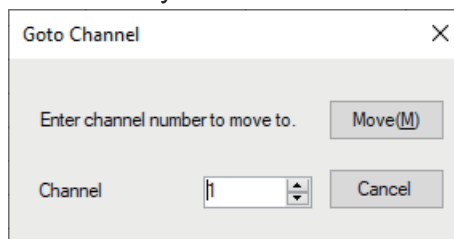
Select the column from the drop down list. Enter the text to search for, and then click the [**Find**] button. The candidate character string found will be highlighted.

- **Find Next**

Click the "Find Next" parameter in the "Edit" menu to move to the next candidate character string.

- **Goto Channel**

Move the cursor to the desired channel, click the "Goto Channel" parameter in the "Edit" menu to open the screen where you can specify the channel you want to move to.



Enter the channel number you wish to find, and then click the [OK] button.

• Insert Channel

To insert channel data, click the "Insert Channel" parameter in the "Edit" menu to create a blank new channel data row under a current cursor. If there are any higher channel numbers with channel data, the higher channel numbers will be displayed after the newly inserted channel number so that the channels are displayed in the ascending order.

Attempting to insert a new channel when highest channel contains data causes the data registered to highest channel to be deleted. "Continue?" will appear. If you agree, click the [OK] button.

• Delete Channel

To delete the specified range of channel data, click the "Delete Channel" parameter in the "Edit" menu. The channels that were displayed after the deleted channels will shift up accordingly.

• Clear Channel

To clear the current channel data, click the "Clear Channel" parameter in the "Edit" menu. The channels that were displayed after the deleted channels will not shift up and the blank channels will remain.

• Move Up

To move the current channel data up one row, click the "Move Up" parameter in the "Edit" menu.

If other channel data already exists where the channel data moves, the existing channel will be overwritten.

• Move Down

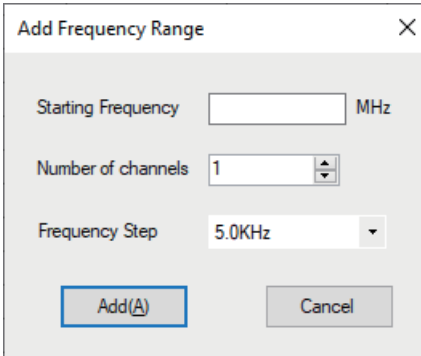
To move the current channel data down one row, click the "Move Down" parameter in the "Edit" menu, the currently selected channel data moves downward one row.

If other channel data already exists where the channel data moves, the existing channel will be overwritten.

• Add Frequency Range

New channels may be created in designated frequency steps from the starting frequency by clicking the left mouse button on the "Add Frequency Range" parameter in the "Edit" menu. The "Add Frequency Range" window will open.

A specified number of memory channels may be created, beginning from the starting frequency in the specified frequency steps.



Starting Frequency: Enter the lower frequency

Number of Channel: Enter the number of channels

Frequency Step: Enter the desire frequency step

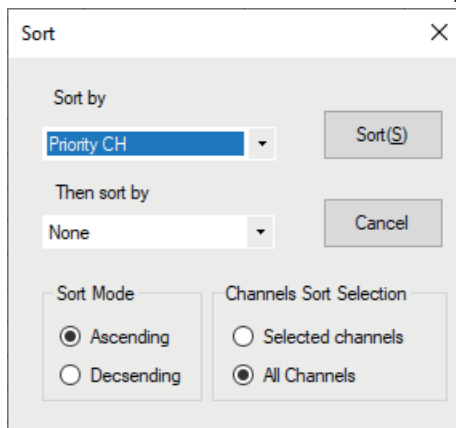
Click the [OK] button to create the additional specified memory channels.



* The 8.33 kHz step is available only when receiving on the Air band (108-136.995 MHz).

• Sort

Click the "Sort" parameter in the "Edit" menu, the "Sort" window will open.



Sort by:

Select the first parameter for sorting items such as the order of frequencies.

Then sort by:

Select the second parameter for sorting.

Sort Mode:

Set to sort in ascending or descending order.

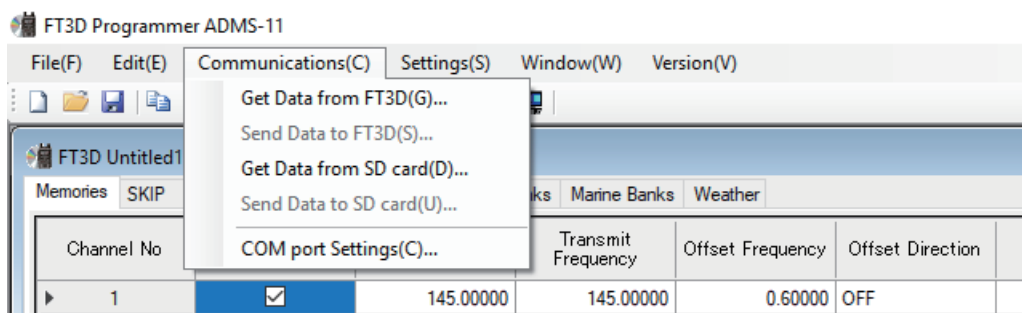
Channels Sort Selection:

Set whether to sort the selected channel column(s) or to sort all channel columns.

Click the [Sort] button to initiate the sorting according to the above instructions.

The data may be restored to the previous order by using the "Undo" command.

Communications (Data communication with the FT3DR/DE)



For details on the Communications Menu, refer to "Communications (Data communication with the FT-3DR/DE)" (Page 9).

Settings

• Set Mode

From the set mode menu, you can customize the various functions of the FT3DR/DE according to your preferences.

The ADMS-11 software displays the set mode menu in an easy-to-understand manner where you can change and save the setting values.

Click the "Settings" parameter in the "Settings" menu to open the "SetMode" window.

SetMode

CommonGM_WIRES-XAPRS GPSAPRS BeaconMemory

Config

APOOFF

BCLOOFF

BEEP SELECTKEY & SCAN

BEEP EDGEOFF

BEEP LEVELHIGH

BUSY LED A BANDON

BUSY LED B BANDON

BUSY LED RADIOON

POWER ON TIMEROFF

0000

POWER OFF TIMEROFF

0000

PASSWORDOFF

GPS LOG INTERVALOFF

HOME/VFOENABLE

LOCKKEY & DIAL

MON/T-CALLMONITOR

PTT DELAYOFF

RPT ARSON

SAVE RX0.05sec (1:1)

TIME SIGNALOFF

VFO MODEBAND

TO3min 00sec

Dial Knob ChangeInside: Dial

TX/RX

Mic GainLevel 7

MUTEOFF

AF DUALTRX 2sec

VOXOFF

VOX DELAY0.5sec

Recording BandA

Mic RecordingOFF

DTMF SELECT

Channel No	Code
1	
2	
3	
4	
5	
6	
7	
8	
9	
10	

Display

GPS InfoCompass

CompassHEADING UP

Band Scope39ch

Lamp TimerKey 30sec

Lamp SAVEOFF

LanguagENGGLISH

LCD DimmerLevel 6

Opening MessageDC

SCAN

DW Interval5.0sec

Scan LampON

Scan Re-Start2.0sec

Scan Resume5.0sec

DW ResumeHOLD

Scan Width

A BAND VFOBAND

A BAND MEMORYALL CH

B BAND VFOBAND

B BAND MEMORYALL CH

PRIORITY REVERTOFF

Bluetooth

BluetoothOFF

Bluetooth SAVEOFF

Signaling

DTMF

TX ModeMANUAL

TX Delay450ms

TX Speed50ms

PAGER

Answer BackOFF

RX CODE105

RX CODE247

TX CODE105

TX CODE247

A BAND SQL LEVELLevel 1

B BAND SQL LEVELLevel 1

AM Radio SQL LEVELLevel 1

FM Radio SQL LEVELLevel 2

SQL ExpansionOFF

TONE Search MUTEON

TONE Search SpeedFAST

BELL1time

WX AlertOFF

USB Camera

Size320*240

QualityLOW

SP SelectCAMERA

To change the setting of each item in the window, click the "▼" icon to show the dropdown settings list, and then click the desired selection in the list.

Example:

SetMode

CommonGM_WIRES-XAPRS GPSAPRS BeaconMemory

Config

APOOFF

BCLOOFF

BEEP SELECT30min

BEEP EDGE1hour

BEEP LEVEL1hour 30min

BUSY LED A BAND2hour

BUSY LED B BAND2hour 30min

BUSY LED RADIO3hour

POWER ON TIMER3hour 30min

8hour

8hour 30min

9hour

9hour 30min

10hour

10hour 30min

11hour

11hour 30min

12hour

17

Refer to the "FT3DR/DE Operating Manual" for the details of each function.
When you have completed editing the settings of the Menu Setting window.

• Tool Bar

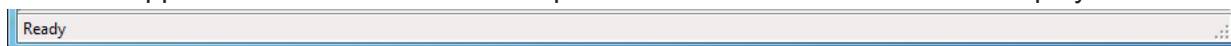
Click the "Toolbar" parameter in the "Setting" menu to display or hide the Toolbar.
A check mark appears next to the "Toolbar" parameter when the Toolbar is displayed.



• Status Bar

The "Status Bar" describes the action to be executed by the selected menu item, or the depressed toolbar button, and keyboard latch state.

A check mark appears next to the "Status Bar" parameter when the Status Bar is displayed.



Window

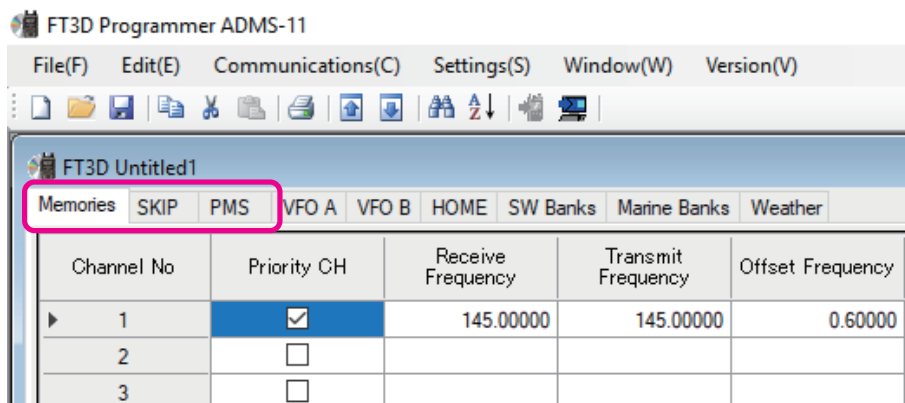
This menu sets the operating window parameters of the ADMS-11 programmer.

- Click the "Tile (up and down)" parameter in the "Window" menu to display multiple template files by dividing the window into two lists (upper and lower parts).
- Click the "Tile (up and down)" parameter in the "Window" menu to display multiple template files by dividing the window into two lists (right and left parts).
- Click the "Cascade" parameter in the "Window" menu to display multiple templates in cascade format.

Setting the Template Items

Memory

Use this page to edit the Memory channels data, Skip Memory channels, or PMS (Programmable Memory Scan) memory channels.



Memories

Enter and edit the frequencies you normally use to the memory channels. Up to 900 channels can be registered.

SKIP

When scanning the VFO, if there are frequencies with continuous signals, scanning may be interrupted. Up to 99 channels can be registered.

PMS

Edit the upper and lower limit frequencies for performing PMS (Programmable Memory Scan). Enter the lower limit frequency for the L channel and the upper limit frequency for the corresponding U channel. Up to 50 pairs (100 channels) of PMS can be registered.

About the setting items of each memory channels

• Priority CH

While Dual Watch is functioning, this channel is designated as the priority channel to be monitored before other channels. Only one normal memory channel can be set as Priority CH. Tick the checkbox of the desired channel.

This setting is allowed only with the normal memory channel.

• Receive Frequency/ Transmit Frequency

Enter the desired receive/transmit frequency. When the frequency entry is complete, use the → key to move the cursor to the right and subsequently configure the additional detail settings for the channel. To enter the transmit frequency for the next channel, press the ENTER or ↓ key. The receive and transmit frequencies can be set separately.

• Offset Frequency

When a transmit frequency is not entered, transmission will be performed at a frequency obtained by adding/subtracting the offset frequency to/from the receive frequency.

• Offset Direction

Set the frequency shift direction.

- OFF: The transmit frequency is not shifted.
-RPT: The transmit frequency is shifted to the minus offset.
+RPT: The transmit frequency is shifted to the plus offset.
-/+: The transmit frequency is not shifted.

• AUTO MODE

When tick the check box of AUTO MODE, the receive mode (FM mode or AM mode) is automatically selected. Un-ticking the checkbox enables selecting the operating mode.

• Operating Mode

Select the operating mode for receive channel.

- FM: The selected frequency band is set to FM mode.
AM: The selected frequency band is set to AM mode.

• DIG/ANALOG

The AMS, V/D mode (DN), the Voice FR mode (VW) and the ANALOG mode (FM/AM mode) are selectable.



When the Set Mode [Digital] - [VW] is set to "OFF", the Voice FR mode (VW) can not be selected.

• TAG

By ticking the checkbox of this item, when recalling the memory channels, the set memory tag and receive frequency are displayed. By Turning off the checkbox, the receive frequency is only displayed. This setting is common to all memory channels.

• Name

Enter the desired memory name (up to 16 digits).

• Tone Mode

This item selects the Audio Squelch Code type.

• CTCSS Frequency

This item selects the Tone Frequency of the Tone Squelch.

• DCS Code

Select the DCS code when DCS is set.

• DCS Polarity

Change the phase inversion of the DCS code for receive/transmit. When communication using the DCS code cannot be achieved, changing the phase inversion might enable the DCS code communication.

- **User CTCSS**

Select the idle line frequency to remove signals such as idle line signals used by private railways and control signals of MCA radio system.

- **RX DG-ID**

Select the receiving DG-ID number.

- **TX DG-ID**

Select the transmitting DG-ID number

- **Tx Power**

This item selects the TX Power.

- **Skip**

Select the scanning condition for receiving channels.

OFF: Performs scanning according to the set mode basic setting – SCAN RESUME.

SKIP: Skips the designated memory channels during scanning.

SELECT: Starts scanning from a designated channel and scans only designated channels.

- **AUTO STEP**

By ticking the checkbox of this item, the frequency step is set to “AUTO” automatically provides a suitable frequency step (frequency variation by rotating the **DIAL** knob) according to the frequency band. By turning off the checkbox, the step setting become selectable.

- **Step**

Sets the channel step for receiving channels.

- **Memory Mask**

By ticking the checkbox of this item, the channel may not recall temporally.

Un-ticking the checkbox enables calling the memory channel.

- **ATT**

By ticking the checkbox of this item, the receive sensitivity is lowered by about 10dB. This is useful when, for example, an adjacent strong radio wave interferes with the reception.

- **S Meter SQL**

Configure the normal noise squelch setting, and also the S-meter squelch level setting.

- **Bell**

Outputs a ringing tone when receiving a signal that satisfies the conditions set from the squelch type. Set the number of times the tone (bell) rings.

- **Narrow**

By ticking the checkbox of this item, switches to the Narrow FM mode.

• **Clock Shift**

When an internal spurious signal occurs due to the microcomputer clock, turn this setting on (tick the checkbox). This may improve the situation.

Usually, this item is set to "OFF" (un-tick the checkbox).

• **BANK 1 to BANK 24**

A combination of up to 100 memory channels and preset memory channels can be registered to each of BANK 1 to BANK 24. In the column of each channel, tick the checkbox of the BANK to register the desired channel.

When recalling a bank, only channels registered to the bank will be recalled.

• **Comment**

Comments may be added to the registered memory channels. Up to 255 letters can be used. This function is useful in organizing the memory channels by, for example, applying a category name to each channel.

These comments are not transferred to the FT3DR/DE.

VFO A / VFO B

Edit the VFO A / VFO B configurations for each band on this page template.

FT3D Programmer ADMS-11

File(F) Edit(E) Communications(C) Settings(S) Window(W) Version(V)

FT3D Untitled1

Memories SKIP PMS **VFO A** VFO B HOME SW Banks Marine Banks Weather

Band	Receive Frequency	Transmit Frequency	Offset Frequency	Offset Direct
▶ AM BC Band	0.54000	0.54000	0.00000	OFF
SW Band	1.80000	1.80000	0.00000	OFF
50MHz Band	50.00000	50.00000	0.00000	OFF
FM BC Band	76.00000	76.00000	0.00000	OFF
AIR Band	108.00000	108.00000	0.00000	OFF
144MHz Band	145.00000	145.00000	0.60000	OFF
VHF Band	174.00000	174.00000	0.00000	OFF
INFO Band1	222.00000	222.00000	0.00000	OFF
430MHz Band	433.00000	433.00000	5.00000	OFF
UHF Band	470.00000	470.00000	0.00000	OFF
INFO Band2	860.00000	860.00000	0.00000	OFF

VFO A

FT3D Programmer ADMS-11

File(F) Edit(E) Communications(C) Settings(S) Window(W) Version(V)

FT3D Untitled1

Memories SKIP PMS VFO A **VFO B** HOME SW Banks Marine Banks Weather

Band	Receive Frequency	Transmit Frequency	Offset Frequency	Offset Direct
▶ AIR Band	108.00000	108.00000	0.00000	OFF
144MHz Band	145.00000	145.00000	0.60000	OFF
VHF Band	174.00000	174.00000	0.00000	OFF
INFO Band1	222.00000	222.00000	0.00000	OFF
430MHz Band	433.00000	433.00000	5.00000	OFF
UHF Band	470.00000	470.00000	0.00000	OFF

VFO B

About the setting items of VFO A / VFO B frequencies

• Receive Frequency

Enter the VFO frequencies for each band. The FT3DR/DE default Frequencies are pre-entered into the ADMS-11 standard template.

A frequency that is out of the transceiver's range cannot be entered. When the error pop-up window is opened, enter the correct frequency.

• Transmit Frequency

The transmit frequency display is grayed out, and it will be set automatically, in accordance with the receive, and the offset frequencies.

• Offset Frequency

When a transmit frequency is not entered, transmission will be performed at a frequency obtained by adding/subtracting the offset frequency to/from the receive frequency.

• Offset Direction

Set the frequency shift direction.

OFF: The transmit frequency is not shifted.

-RPT: The transmit frequency is shifted to the minus offset.

+RPT: The transmit frequency is shifted to the plus offset.

• AUTO MODE

When tick the check box of AUTO MODE, the receive mode (FM mode or AM mode) is automatically selected. Un-ticking the checkbox enables selecting the operating mode.

• Operating Mode

Select the operating mode for receive channel.

FM: The selected frequency band is set to FM mode.

AM: The selected frequency band is set to AM mode.

• DIG/ANALOG

The AMS, V/D mode (DN), the Voice FR mode (VW) and the ANALOG mode (FM/AM mode) are selectable.



When the Set Mode [Digital] - [VW] is set to "OFF", the Voice FR mode (VW) can not be selected.

• Tone Mode

This item selects the Audio Squelch Code type.

• CTCSS Frequency

This item selects the Tone Frequency of the Tone Squelch.

• DCS Code

Select the DCS code when DCS is set.

• DCS Polarity

Change the phase inversion of the DCS code for receive/transmit. When communication using the DCS code cannot be achieved, changing the phase inversion might enable the DCS code communication.

- **User CTCSS**

Select the idle line frequency to remove signals such as idle line signals used by private railways and control signals of MCA radio system.

- **RX DG-ID**

Select the receiving DG-ID number.

- **TX DG-ID**

Select the transmitting DG-ID number

- **Tx Power**

This item selects the TX Power.

- **AUTO STEP**

By ticking the checkbox of this item, the frequency step is set to "AUTO" automatically provides a suitable frequency step (frequency variation by rotating the **DIAL** knob) according to the frequency band. By Turning off the checkbox, the step setting become selectable.

- **Step**

Sets the channel step for receiving channels.

- **ATT**

By ticking the checkbox of this item, the receive sensitivity is lowered by about 10dB. This is useful when, for example, an adjacent strong radio wave interferes with the reception.

- **S Meter SQL**

Configure the normal noise squelch setting, and also the S-meter squelch level setting.

- **Bell**

Outputs a ringing tone when receiving a signal that satisfies the conditions set from the squelch type. Set the number of times the tone (bell) rings.

- **Narrow**

By ticking the checkbox of this item, switches to the Narrow FM mode.

- **Clock Shift**

When an internal spurious signal occurs due to the microcomputer clock, turn this setting on (tick the checkbox). This may improve the situation.

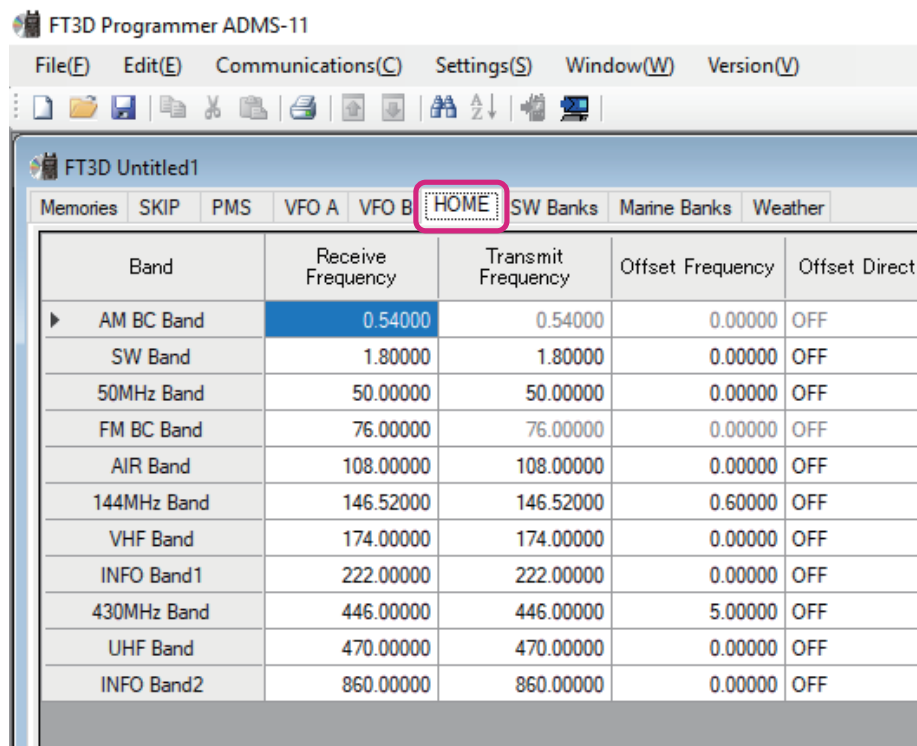
Usually, this item is set to "OFF" (un-tick the checkbox).

- **Comment**

Comments may be added to the edited VFO bands. Up to 255 letters can be used. This function is useful in organizing the VFO bands by, for example, applying a category name to each VFO bands. These comments are not transferred to the FT3DR/DE.

HOME

Edit the Home Channel configurations:



About the setting items of HOME channel frequency

• Receive Frequency / Transmit Frequency

Enter any desired changes into Home Channel frequency. The FT3DR/DE default Frequencies are pre-entered into the ADMS-11 standard template.

A frequency that is out of the transceiver's range cannot be entered. When the error pop-up window is opened, enter the correct frequency. Inputting the receive frequency, the transmit frequency is automatically set.

• Offset Frequency

When a transmit frequency is not entered, transmission will be performed at a frequency obtained by adding/subtracting the offset frequency to/from the receive frequency.

• Offset Direction

Set the frequency shift direction.

- OFF: The transmit frequency is not shifted.
- RPT: The transmit frequency is shifted to the minus offset.
- +RPT: The transmit frequency is shifted to the plus offset.
- /+ : The transmit frequency is not shifted.

• AUTO MODE

When tick the check box of AUTO MODE, the receive mode (FM mode or AM mode) is automatically selected. By Turning off the checkbox, the receive mode is selectable.

• Operating Mode

Select the operating mode for receive channel.

FM: The selected frequency band is set to FM mode.

AM: The selected frequency band is set to AM mode.

• DIG/ANALOG

The AMS, V/D mode (DN), the Voice FR mode (VW) and the ANALOG mode (FM/AM mode) are selectable.



When the Set Mode [Digital] - [VW] is set to "OFF", the Voice FR mode (VW) can not be selected.

• TAG

By ticking the checkbox of this item, when recalling the HOME channels, the set memory tag and receive frequency are displayed. By Turning off the checkbox, the receive frequency is only displayed. This setting is common to all HOME channels.

• Name

Enter the desired memory name (up to 16 digits).

• Tone Mode

This item selects the Audio Squelch Code type.

• CTCSS Frequency

This item selects the Tone Frequency of the Tone Squelch.

• DCS Code

Select the DCS code when DCS is set.

• DCS Polarity

Change the phase inversion of the DCS code for receive/transmit. When communication using the DCS code cannot be achieved, changing the phase inversion might enable the DCS code communication.

• User CTCSS

Select the idle line frequency to remove signals such as idle line signals used by private railways and control signals of MCA radio system.

• RX DG-ID

Select the receiving DG-ID number.

• TX DG-ID

Select the transmitting DG-ID number

- **Tx Power**

This item selects the TX Power.

- **AUTO STEP**

By ticking the checkbox of this item, the frequency step is set to "AUTO" automatically provides a suitable frequency step (frequency variation by rotating the DIAL knob) according to the frequency band. By Turning off the checkbox, the step setting become selectable.

- **Step**

Sets the channel step for receiving channels. Normally, when a frequency is entered, the optimal channel step will be automatically set according to the frequency.

- **ATT**

By ticking the checkbox of this item, the receive sensitivity is lowered by about 10dB. This is useful when, for example, an adjacent strong radio wave interferes with the reception.

- **S Meter SQL**

Configure the normal noise squelch setting, and also the S-meter squelch level setting.

- **Bell**

Outputs a ringing tone when receiving a signal that satisfies the conditions set from the squelch type. Set the number of times the tone (bell) rings.

- **Narrow**

By ticking the checkbox of this item, switches to the Narrow FM mode. The degree of modulation becomes half the normal level.

- **Clock Shift**

When an internal spurious signal occurs due to the microcomputer clock, turn this setting on (tick the checkbox). This may improve the situation.

Usually, this item is set to "OFF" (un-tick the checkbox).

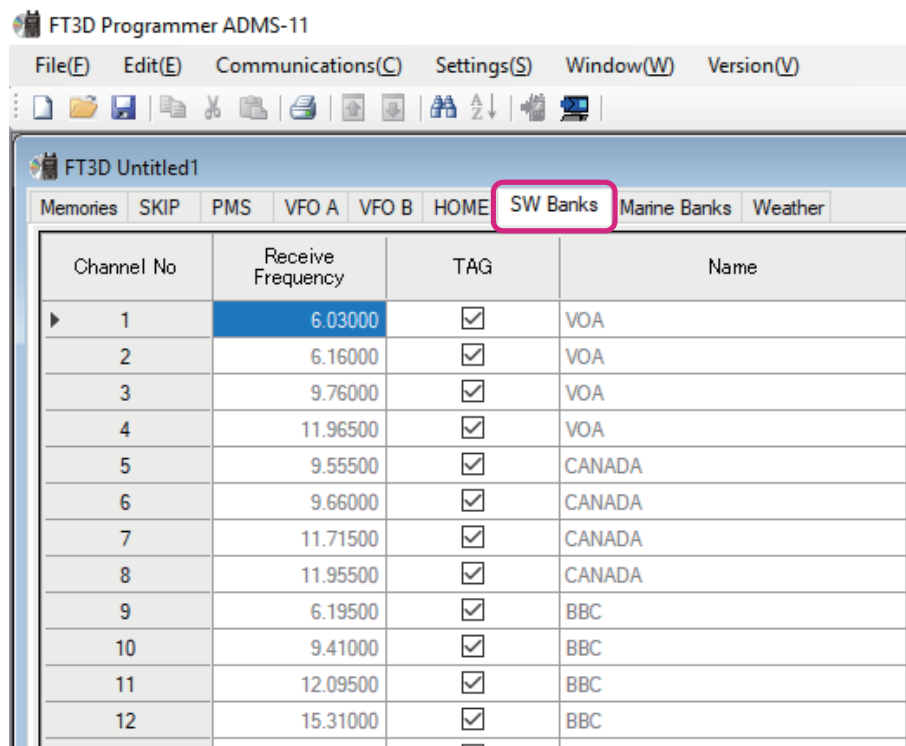
- **Comment**

Comments may be added to the edited HOME channels. Up to 255 letters can be used. This function is useful in organizing the HOME channels by, for example, applying a category name to each channel.

These comments are not transferred to the FT3DR/DE.

SW Banks

Edit shortwave broadcasting channels:



About the setting items of SW Banks channel frequency

• TAG

By ticking the checkbox of this item, when recalling the Shortwave broadcasting channels, the set memory tag and receive frequency are displayed. By Turning off the checkbox, the receive frequency is only displayed. This setting is common to all shortwave broadcasting channels.

• ATT

By ticking the checkbox of this item, the receive sensitivity is lowered by about 10dB. This is useful when, for example, an adjacent strong radio wave interferes with the reception. This setting is common to all shortwave broadcasting channels.

• BANK 1 to BANK 24

Shortwave broadcasting channels can be registered to each of BANK 1 to BANK 24. In the column of each channel, tick the checkbox of the BANK to register the desired channel.

• Comment

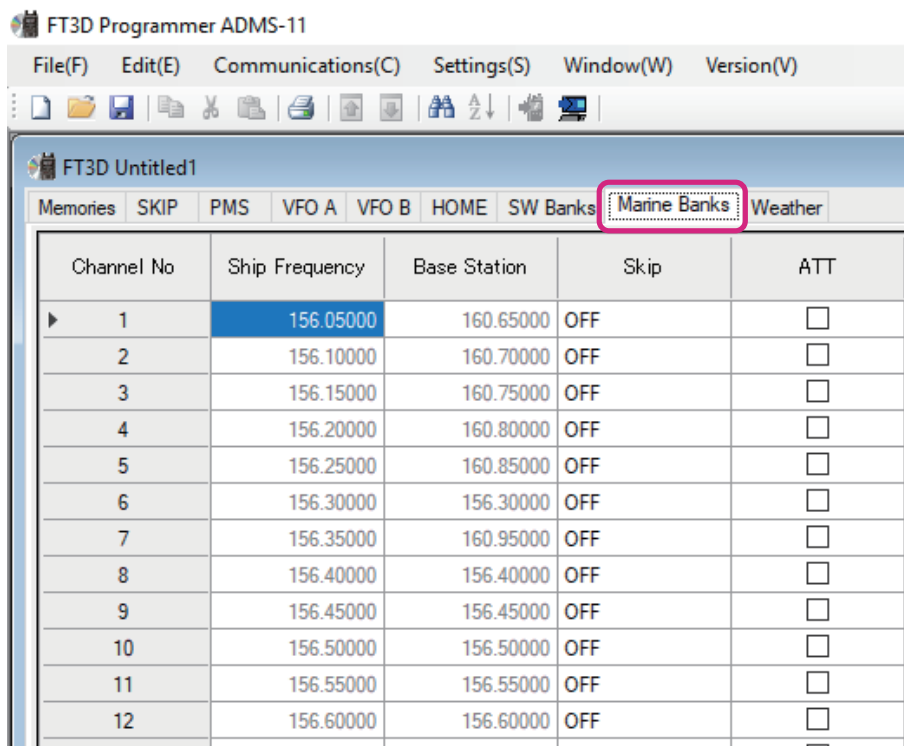
Comments may be added to the edited shortwave broadcasting channels. Up to 255 letters can be used. This function is useful in organizing the shortwave broadcasting channels by, for example, applying a category name to each channel.

These comments are not transferred to the FT3DR/DE.

Other editing operations such as frequency editing cannot be performed.

Marine Banks

Edit 57 international VHF (marine band) channels in total:



About the setting items of Marine Banks channel frequency

• Skip

Select the scanning condition for receiving channels.

OFF: Performs scanning according to the set mode basic setting – SCAN RESUME.

SKIP: Skips the designated memory channels during scanning.

SELECT: Starts scanning from a designated channel and scans only designated channels.

• ATT

By ticking the checkbox of this item, the receive sensitivity is lowered by about 10dB. This is useful when, for example, an adjacent strong radio wave interferes with the reception.

This setting is common to all marine channels.

• BANK 1 to BANK 24

Marine channels can be registered to each of BANK 1 to BANK 24. In the column of each channel, tick the checkbox of the BANK to register the desired channel.

• Comment

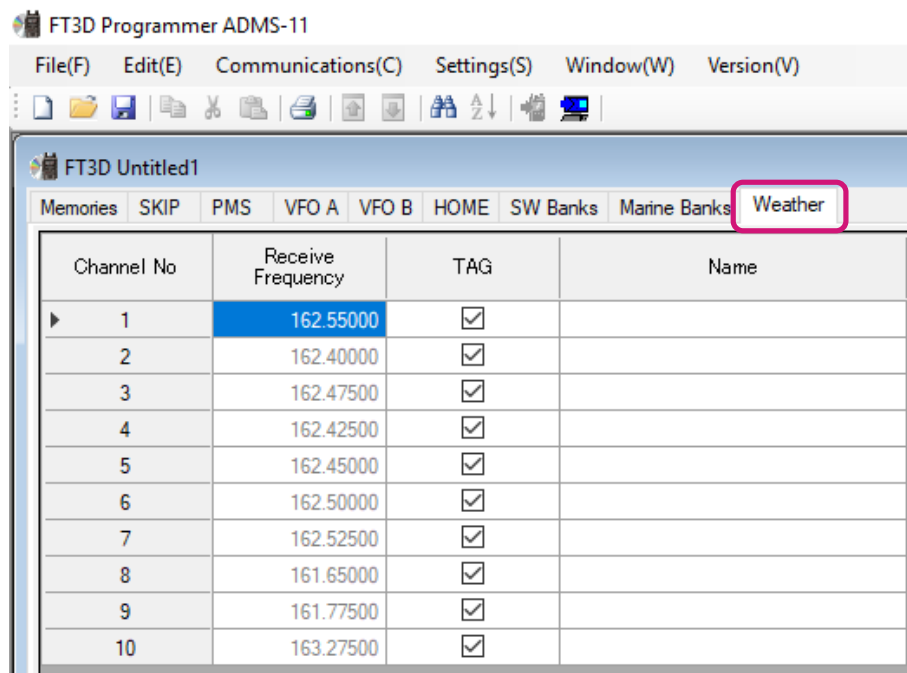
Comments may be added to the edited marine channels. Up to 255 letters can be used. This function is useful in organizing the marine channels by, for example, applying a category name to each channel.

These comments are not transferred to the FT3DR/DE.

Other editing operations such as frequency editing cannot be performed.

Weather

Edit 10 VHF Weather Broadcast Station channels in total.



About the setting items of Weather channel frequency

• TAG

By ticking the checkbox of this item, when recalling the weather channels, the set memory tag and receive frequency are displayed. By Turning off the checkbox, the receive frequency is only displayed. This setting is common to all weather channels.

• Name

Enter the desired memory name (up to 16 digits).

• Skip

Select the scanning condition for receiving channels.

OFF: Performs scanning according to the set mode basic setting – SCAN RESUME.

SKIP: Skips the designated memory channels during scanning.

SELECT: Starts scanning from a designated channel and scans only designated channels.

• ATT

By ticking the checkbox of this item, the receive sensitivity is lowered by about 10dB. This is useful when, for example, an adjacent strong radio wave interferes with the reception.

This setting is common to all weather channels.

• BANK 1 to BANK 24

Weather channels can be registered to each of BANK 1 to BANK 24. In the column of each channel, tick the checkbox of the BANK to register the desired channel.

• Comment

Comments may be added to the edited weather channels. Up to 255 letters can be used. This function is useful in organizing the weather channels by, for example, applying a category name to each channel. These comments are not transferred to the FT3DR/DE.

Other editing operations such as frequency editing cannot be performed.

Troubleshooting

The FT3DR/DE cannot receive or transmit data to the computer. The Data transfer does not start.

- Verify that the programming cable is correctly connected to the FT3DR/DE data port and to the Computer.

Connect correctly.

- The battery of the FT3DR/DE may be depleted.

Charge the battery or replace the battery with the new one.

- Is the computer COM Port setting correct?

Set the COM Port correctly.

- Are you operating in a different order from the clicked the “Get Data from FT3D” in the “Communications” menu and displayed procedure?
- Follow the on-screen instructions.
- Are you operating in a different order from the clicked the “Send Data to FT3D” in the “Communications” menu and displayed procedure?

Follow the on-screen instructions.

The data transmission has stopped before completion

- Disconnecting the connection cable or poor contact of the connection cable.

Confirm the cable connection and try again.

- The battery of the FT3DR/DE may be depleted.

Charge the battery or replace the battery with the new one.

The data import/export is not successful

- Adjust the number of the rows of CSV file.
- Use the designated letter for the character string.
- When importing and exporting channels such as memory channels and VFO channels, make sure that the template files are consistent. If the template files are different, an error will occur and the data import and export will not be successful.



Copyright 2019
YAESU MUSEN CO., LTD.
All rights reserved.

No portion of this manual may be
reproduced without the permission of
YAESU MUSEN CO., LTD.

YAESU MUSEN CO., LTD.

Tennozu Parkside Building
2-5-8 Higashi-Shinagawa, Shinagawa-ku, Tokyo 140-0002 Japan

YAESU USA

6125 Phyllis Drive, Cypress, CA 90630, U.S.A.

YAESU UK

Unit 12, Sun Valley Business Park, Winnall Close
Winchester, Hampshire, SO23 0LB, U.K.